

The Conrad N. Hilton Foundation's Homelessness Initiative is helping public and private partners work more effectively to improve the lives of those experiencing homelessness in our community. Our strategy is focused on the most effective solutions to realizing a Los Angeles where homelessness is rare, brief and non-reoccurring. This includes programs that prevent new homelessness and those that quickly move people into permanent housing, focus on mental health, and employ data-backed prevention strategies. We're also working with partners in philanthropy and government to transform LA's homeless response system to reach our ideal state more rapidly than is currently possible.

Ideal state

When our work is successful, homelessness in Los Angeles County will be rare, brief and non-reoccurring. The homelessness response system is addressing inflow into homelessness by working with related systems, (e.g., across local governments; including criminal justice, mental and physical health, child welfare and veterans care) to identify and provide services to people most at risk of experiencing long-term homelessness that prevents their homelessness altogether.

History and background

For nearly three decades, the Foundation has been a national leader in advancing permanent, supportive housing as a long-term solution to chronic homelessness. The Foundation began its work with the Corporation for Supportive Housing to expand the permanent supportive housing model across the country. In 2004, it expanded that partnership specifically in Los Angeles.

In 2010, the Foundation began its five-year Phase I strategy to establish solutions to chronic homelessness in LA County and develop consensus around formalizing these solutions. During Phase I, more than 18,000 chronically homeless and vulnerable individuals secured Permanent Supportive Housing (PSH), including more than 6,000 individuals placed by Foundation-supported

The field will work intentionally to reduce underlying inequities and diminish housing disparities many Angelenos face in securing safe and stable housing. The field addresses housing disparities across demographic groups. Finally, cities in California and around the U.S. are learning and implementing best practices from the strategies used in Los Angeles.

grantees. Phase II began in 2016 to improve system functionality, secure and coordinate new and existing public resource commitments and bring interventions to scale. More than 17,000 individuals experiencing chronic homelessness and veterans secured PSH during this phase.

The Foundation helped support a network of organizations to advance evidence-based solutions that prevent and end homelessness and focus on PSH.

Strategy25 builds upon these successes by further investing in prevention, addressing housing disparities across demographics, mental health, improving data infrastructure and transparency and adding investments that improve and increase interim housing/shelter and permanent housing options.

Five-year goals

10%

decrease in net inflow into homelessness, making homelessness rarer

66%

acceleration in time to rehousing, making homelessness briefer

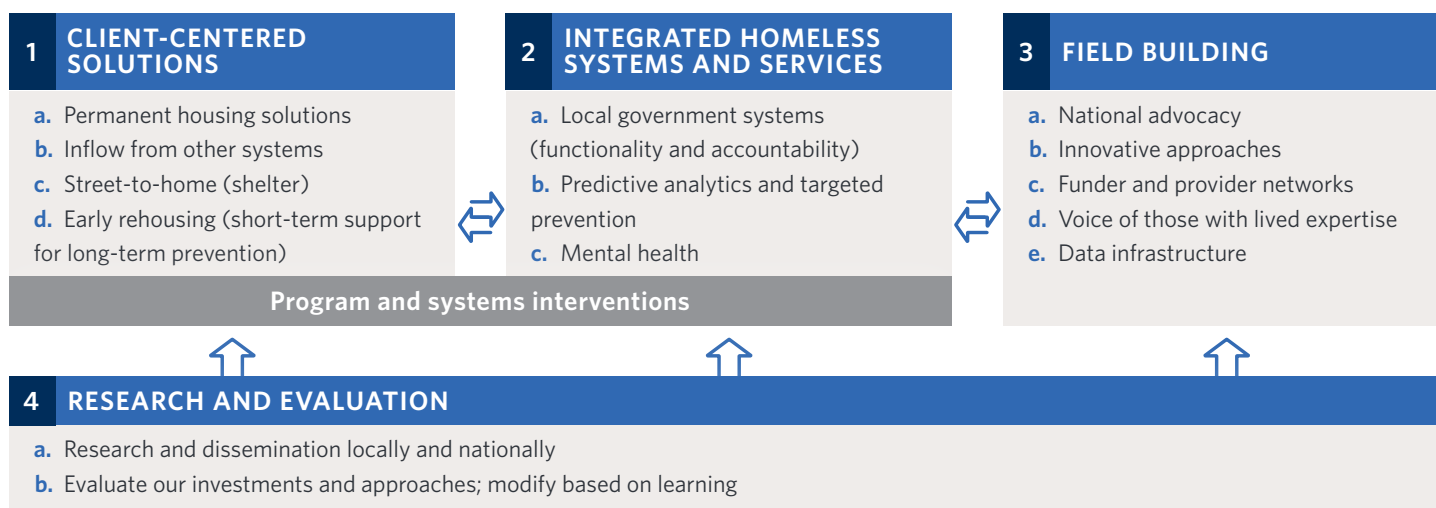
30%

decrease in returns to homelessness, making homelessness less reoccurring

20%

decrease in racial disparities in people experiencing homelessness

Strategy architecture



WHERE WE WORK



POPULATION SERVED

We aim to support all individuals experiencing homelessness in Los Angeles, with particular attention to those at greatest risk of becoming homeless and prolonged homelessness. This includes people who face persistent challenges in accessing and maintaining stable housing, such as:

- Black residents, who make up a disproportionate share of the homeless population relative to the general population
- Young people with heightened vulnerability to homelessness, including LGBTQ youth and young people exiting foster care
- Older adults, who represent a growing portion of the homeless population and often have complex health and housing needs

OTHER KEY METRICS

- 20,000 people are newly placed into permanent housing each year in our focal demographic
- Funding dedicated to effective permanent housing solutions from other systems of care increases from \$53 million in 2020 to \$85 million annually in 2025

PROGRAM COSTS



Phase I (2012-2016):

\$49,115,054

Phase II (2016-2020):

\$81,289,500

Strategy25 (2021-2026):

Est. \$175,000,000

CHALLENGES



- Housing unaffordability is driving first-time homelessness for Angelenos, some of whom are at risk of chronic homelessness
- Research suggests the economic impacts of the COVID-19 pandemic and the expiration of COVID-19 housing protections will accelerate inflow of first-time homelessness
- Nonprofits and public sector entities facing workforce shortages are attempting to scale up quickly while maintaining high-quality, client-centered services and housing regional governance poses a challenge to coordinated and collaborative solutions

OPPORTUNITIES



- Potential to secure new resources and reorient existing resources from other systems (e.g., criminal justice, mental health)
- Prevention of homelessness through early interventions such as direct rental assistance
- Alignment among local, state and national partners on the need to shift the narrative on homelessness and ensure permanent housing and services are welcome and supported in communities