



Southern California Resilience Initiative

PILOT 2

Southern California Receiving Communities Project

PROJECT DESCRIPTION

In Southern California, the Woolsey Fire prompted the evacuation of 295,000 people. Where did people flee to? Were some destinations more popular than others? And how were these displaced Californians treated? Did they receive sufficient shelter? Food? Medicine?

As we prepare for new climate-fueled disasters, the Woolsey experience prompts other questions. How many people actually lost their homes? How many people were displaced? How many remain displaced to this day? Where did displaced Californians resettle? Did they have adequate insurance to cover their losses and the cost of new shelter? Were some communities especially impacted by resettled families? How did the resettlement affect communities that received displaced families? And how did

the new population affect the receiving community—from land values to increased traffic to jobs to the provision of health care to school attendance?

Given the added frequency and severity of climate events, Climate Resolve will work with local municipalities and partners to suggest best practices and innovations to benefit displaced impacted communities. Through SCRI, this project will examine current and future climate impacts facing Southern California and the paths local “refugees” may take, and then how best to prepare communities to receive displaced people. Finally, this project will explore opportunities to create a regional compact or active collaborative to help the region prepare for climate shocks, such as wildfire.

Key Partners: Climate Resolve

ABOUT THE SOUTHERN CALIFORNIA RESILIENCE INITIATIVE

The Conrad N. Hilton Foundation, in partnership with Resilient Cities Catalyst, launched the Southern California Resilience Initiative (SCRI) in 2019 to surface and pilot the world's most innovative solutions to fire and urban heat in the Los Angeles region. As Southern California rebuilds in the wake of the 2018 Woolsey Fire, SCRI aims to strengthen the region's preparedness for wildfire and extreme heat as well as other climate threats—which are projected to become more extreme, frequent, and costly—helping to minimize their impact and ensuring the region can “bounce back” more quickly from future shocks. Because the impacts of wildfires and other climate threats are not confined to municipal boundaries, we are working to foster greater resilience to these events through coordinated efforts at the regional scale.

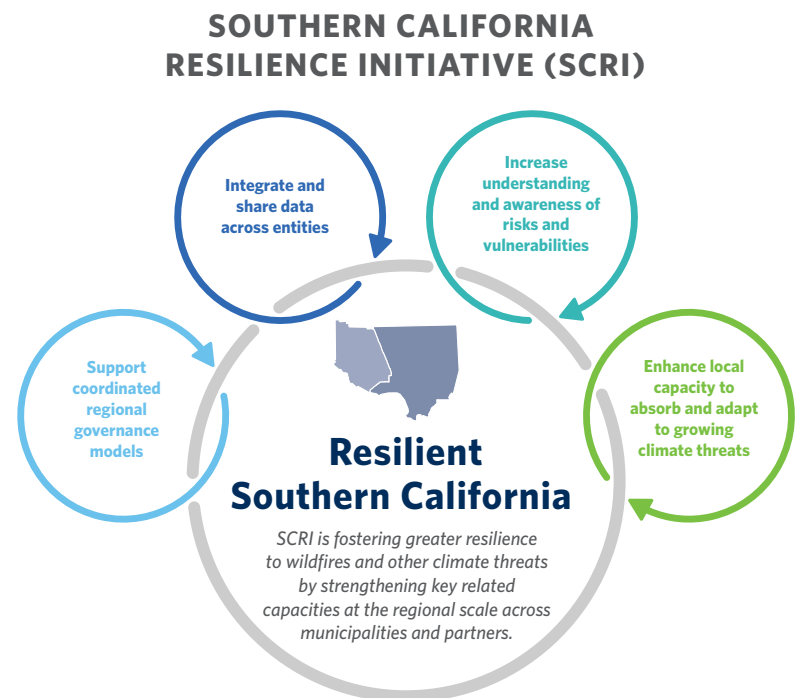
Over the course of 2019, local governments and nonprofit partners—including Ventura County, Los Angeles County, TreePeople, and Climate Resolve—are piloting three replicable projects through the SCRI partnership that share a common vision for a more resilient region that is more capable of absorbing, adapting, and even transforming in the face of current and future challenges.

Through SCRI, we are testing and piloting these projects to prime them for replication and for state, federal, and philanthropic funding opportunities. All projects are receiving pro bono technical assistance and leveraging connections to best practices across the globe through this effort. In addition, SCRI has brought the cohort of participants together at key moments to enhance connections across projects and further encourage collaborations that will foster a more resilient region. These convenings have included a local workshop organized by Climate Resolve in June 2019 where partners began to develop their pilot projects, as well as the Urban Resilience Summit in Rotterdam, the Netherlands in July 2019 where project leaders connected with global experts and gained tactical skills as resilience practitioners. In November 2019, SCRI will bring all three teams together again to advance their projects through a multi-day intensive workshop that will leverage local knowledge, technical expertise, and international best practices to deliver for each project a refined design and a tactical work plan for implementation. We will also use the time together to understand how the different projects and their corresponding activities will contribute to the region's broader resilience capacity.



All three projects are piloting innovative mechanisms that foster a regional approach, across municipalities and multi-sector partners, to planning for and responding to climate threats. While these projects tackle different challenges through varied tactics, they all share common features that will help to build a more resilient region, including:

- Enhancing local capacity to absorb and adapt to growing climate threats
- Increasing understanding and awareness of risks and vulnerabilities
- Integrating and sharing data across entities



Contact Information

Jonathan Parfrey | Climate Resolve | jparfrey@climateresolve.org
Anna Friedman | Resilient Cities Catalyst | afriedman@rcc.city

hiltonfoundation.org/scri