



## Southern California Resilience Initiative

### PILOT 1

### Community Resilience Collaborative and Integrated Data Hub

#### PROJECT DESCRIPTION

Agencies that manage natural resources, infrastructure, community engagement, emergency operations, and communications must be connected to plan, fund, and implement adaptations collaboratively long before disastrous events occur in order to ensure Southern Californians' safety, survival, and resilience. This is especially true as climate-influenced events intensify and overwhelm public services and infrastructure.

Historically, however, these entities have operated separately, resulting in disconnected, single-purpose solutions that lack the connectivity needed to build resilience. TreePeople and the County of Ventura are partnering to pilot integrated mechanisms that address climate-influenced threats.

Using TreePeople's expertise in leading and supporting efforts that break down silos as well as best practices from across the globe, this project will develop a framework for the creation of a multi-purpose, multi-benefit Community Resilience Collaborative to produce and guide implementation of coordinated plans to address and mitigate climate-driven impacts of shocks and stresses such as fires, flooding, extreme heat, water shortages, air and water pollution, and food supply disruption on human health

and safety. This coordination will strengthen the region's climate resilience and provide a replicable model from which others may learn. The Community Resilience Collaborative would bring together multiple infrastructure and public safety agencies and community organizations to plan and implement decentralized and distributed infrastructure solutions to increase climate resilience. The Collaborative's efforts will include preparedness, response, and recovery, through interventions such as neighbor-to-neighbor resilience networks, parcel-scale water storage, and other distributed and green infrastructure projects.

Working from a public agency perspective, the County of Ventura will lead efforts to create an integrated Data Hub that improves data sharing across communities. The Data Hub will leverage data sharing and collaboration to decrease redundant efforts in data gathering and increase the availability of updated data for use in preparation, response and recovery from natural disasters. Pulling data in multiple forms and from multiple sources, the Data Hub will fill gaps in how individuals, agencies, and community organizations are able to use data-driven tools for preparing for, responding to, and recovering from destabilizing events.

**Key Partners:** **TreePeople** | **County of Ventura** | **Accelerating Climate Resilience Project**

## ABOUT THE SOUTHERN CALIFORNIA RESILIENCE INITIATIVE

The Conrad N. Hilton Foundation, in partnership with Resilient Cities Catalyst, launched the Southern California Resilience Initiative (SCRI) in 2019 to surface and pilot the world's most innovative solutions to fire and urban heat in the Los Angeles region. As Southern California rebuilds in the wake of the 2018 Woolsey Fire, SCRI aims to strengthen the region's preparedness for wildfire and extreme heat as well as other climate threats—which are projected to become more extreme, frequent, and costly—helping to minimize their impact and ensuring the region can “bounce back” more quickly from future shocks. Because the impacts of wildfires and other climate threats are not confined to municipal boundaries, we are working to foster greater resilience to these events through coordinated efforts at the regional scale.

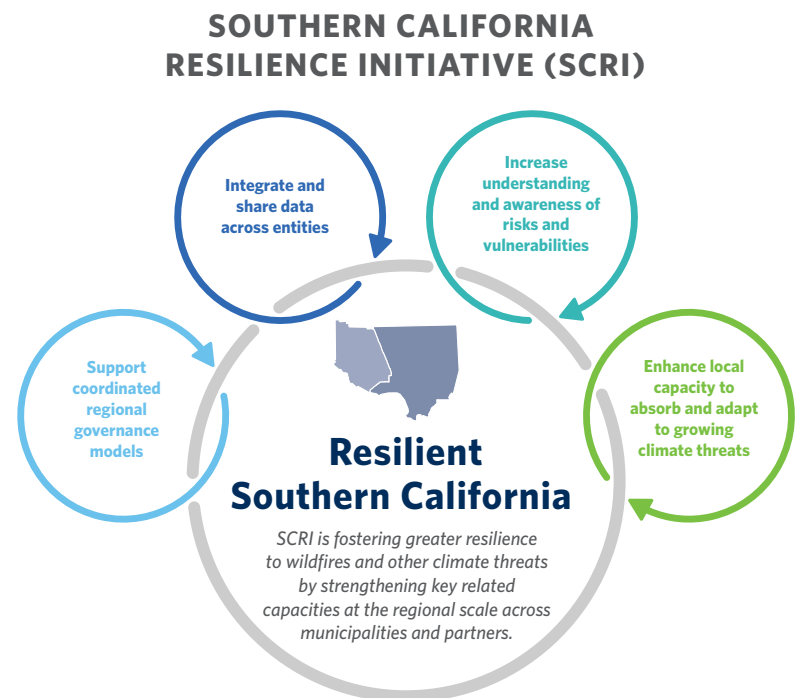
Over the course of 2019, local governments and nonprofit partners—including Ventura County, Los Angeles County, TreePeople, and Climate Resolve—are piloting three replicable projects through the SCRI partnership that share a common vision for a more resilient region that is more capable of absorbing, adapting, and even transforming in the face of current and future challenges.

Through SCRI, we are testing and piloting these projects to prime them for replication and for state, federal, and philanthropic funding opportunities. All projects are receiving pro bono technical assistance and leveraging connections to best practices across the globe through this effort. In addition, SCRI has brought the cohort of participants together at key moments to enhance connections across projects and further encourage collaborations that will foster a more resilient region. These convenings have included a local workshop organized by Climate Resolve in June 2019 where partners began to develop their pilot projects, as well as the Urban Resilience Summit in Rotterdam, the Netherlands in July 2019 where project leaders connected with global experts and gained tactical skills as resilience practitioners. In November 2019, SCRI will bring all three teams together again to advance their projects through a multi-day intensive workshop that will leverage local knowledge, technical expertise, and international best practices to deliver for each project a refined design and a tactical work plan for implementation. We will also use the time together to understand how the different projects and their corresponding activities will contribute to the region's broader resilience capacity.



All three projects are piloting innovative mechanisms that foster a regional approach, across municipalities and multi-sector partners, to planning for and responding to climate threats. While these projects tackle different challenges through varied tactics, they all share common features that will help to build a more resilient region, including:

- Enhancing local capacity to absorb and adapt to growing climate threats
- Increasing understanding and awareness of risks and vulnerabilities
- Integrating and sharing data across entities



### Contact Information

Deborah Bloome | TreePeople | [dbloome@treepeople.org](mailto:dbloome@treepeople.org)  
Clay Downing | County of Ventura | [clay.downing@ventura.org](mailto:clay.downing@ventura.org)  
Anna Friedman | Resilient Cities Catalyst | [afriedman@rcc.city](mailto:afriedman@rcc.city)